



People search engine to organizes public records and social network information



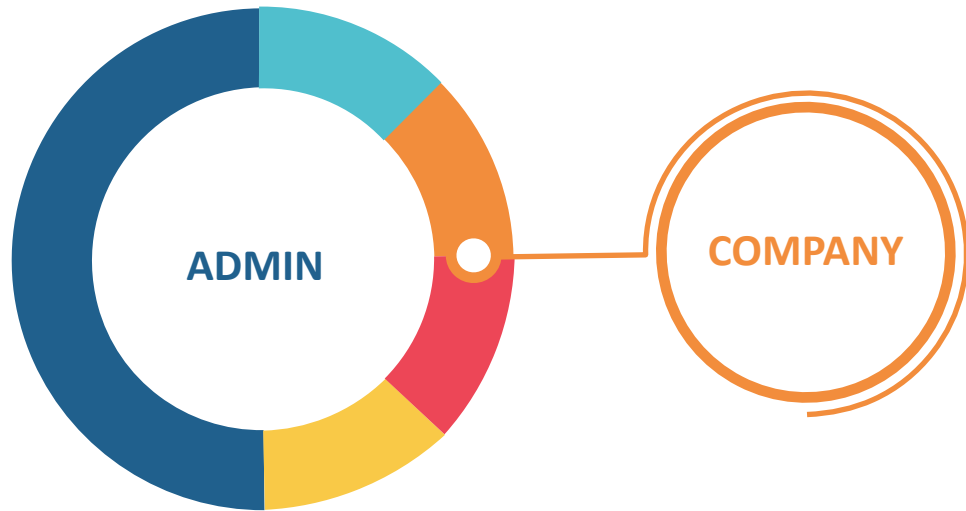
Profilr.social is a people search engine that optimize and organizes public records and using social network information into simple profiles to help you safely find and learn about people.

Profilr.social also allows you to build a case file on individuals, should you need to hire for work, lend for loans or perform a KYC for signup



White-labeled platform with Apps available for Merchant and Customer

PROFILR SOCIAL WIREFRAME

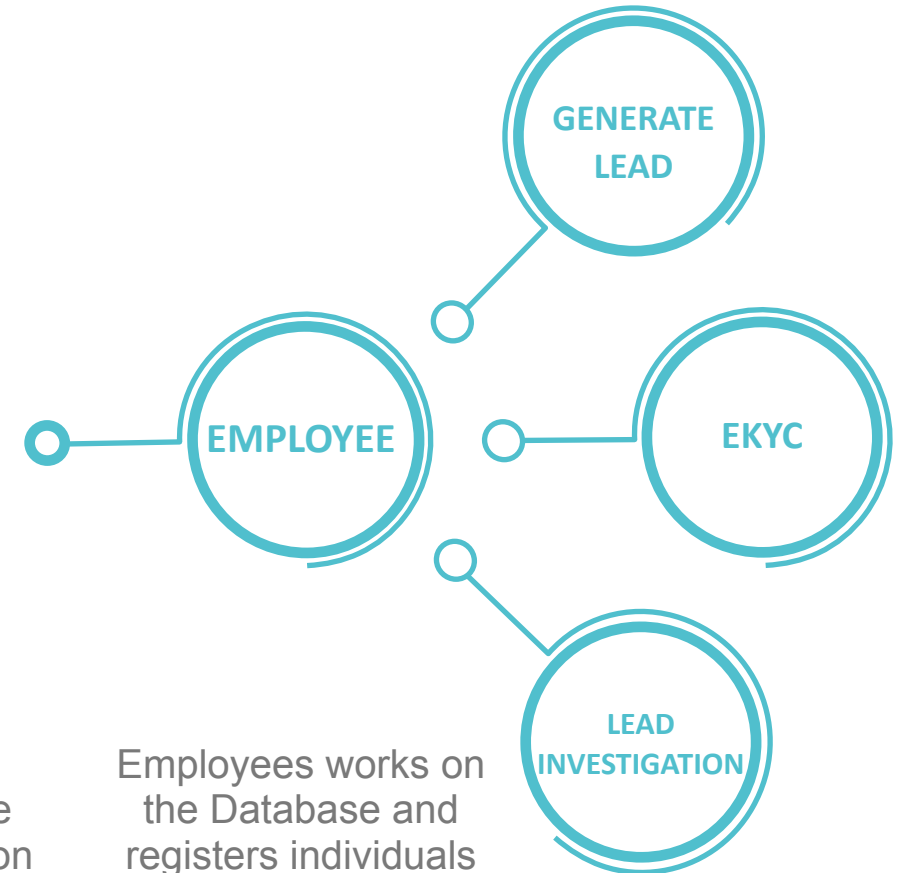


Admin creates companies registers companies on the platform

Registered companies can create login for Employees to access the platform

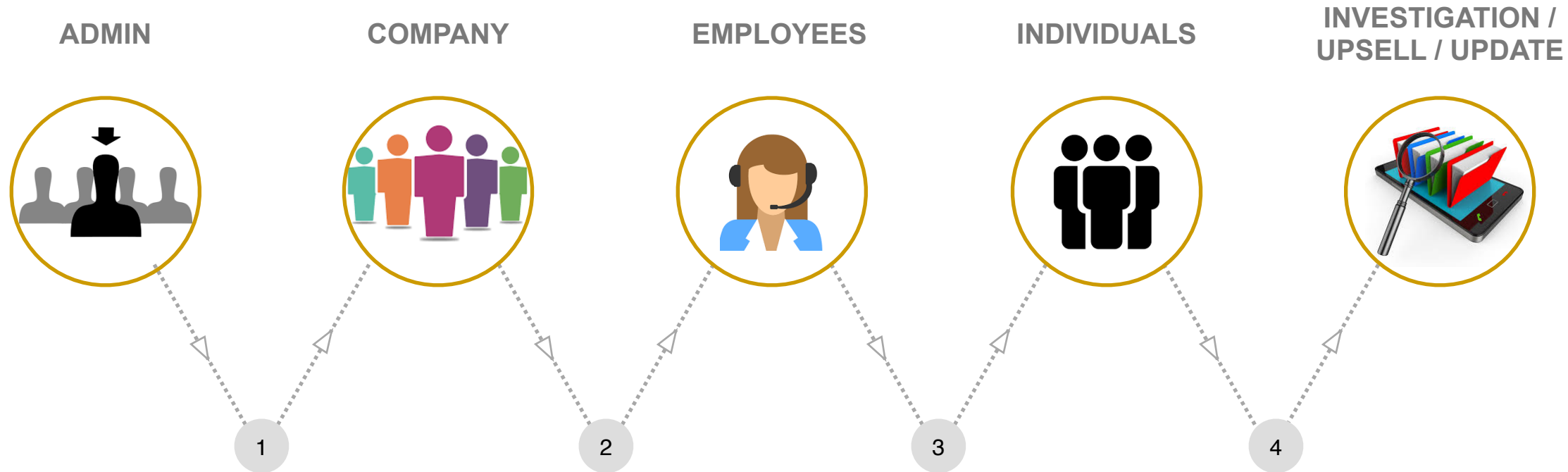


Agents can also register employee and create logins on the platform



Employees works on the Database and registers individuals and investigates on the registered members

PROFILR SOCIAL DATABASE FLOW



Admin has the master database which they assign to companies

Companies sign up and request for database depending on the criteria

Companies assign specific database to their employees

Employees work on the Database and register individuals and investigate, updates or upsells

CUSTOMER JOURNEY

REGISTRATION



1

Individuals receives links to register on the platform

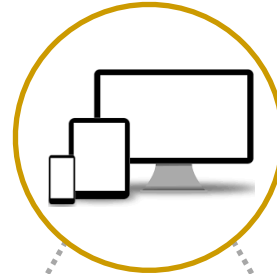
EKYC



2

Individuals does eKYC, Creates a self profile with all the social media links

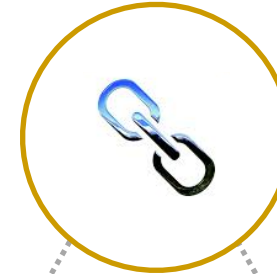
SELF PROFILE



3

A Unique key link is created on registration. Individual can use it to share it with Companies and use it as signature on their email

UNIQUE LINK



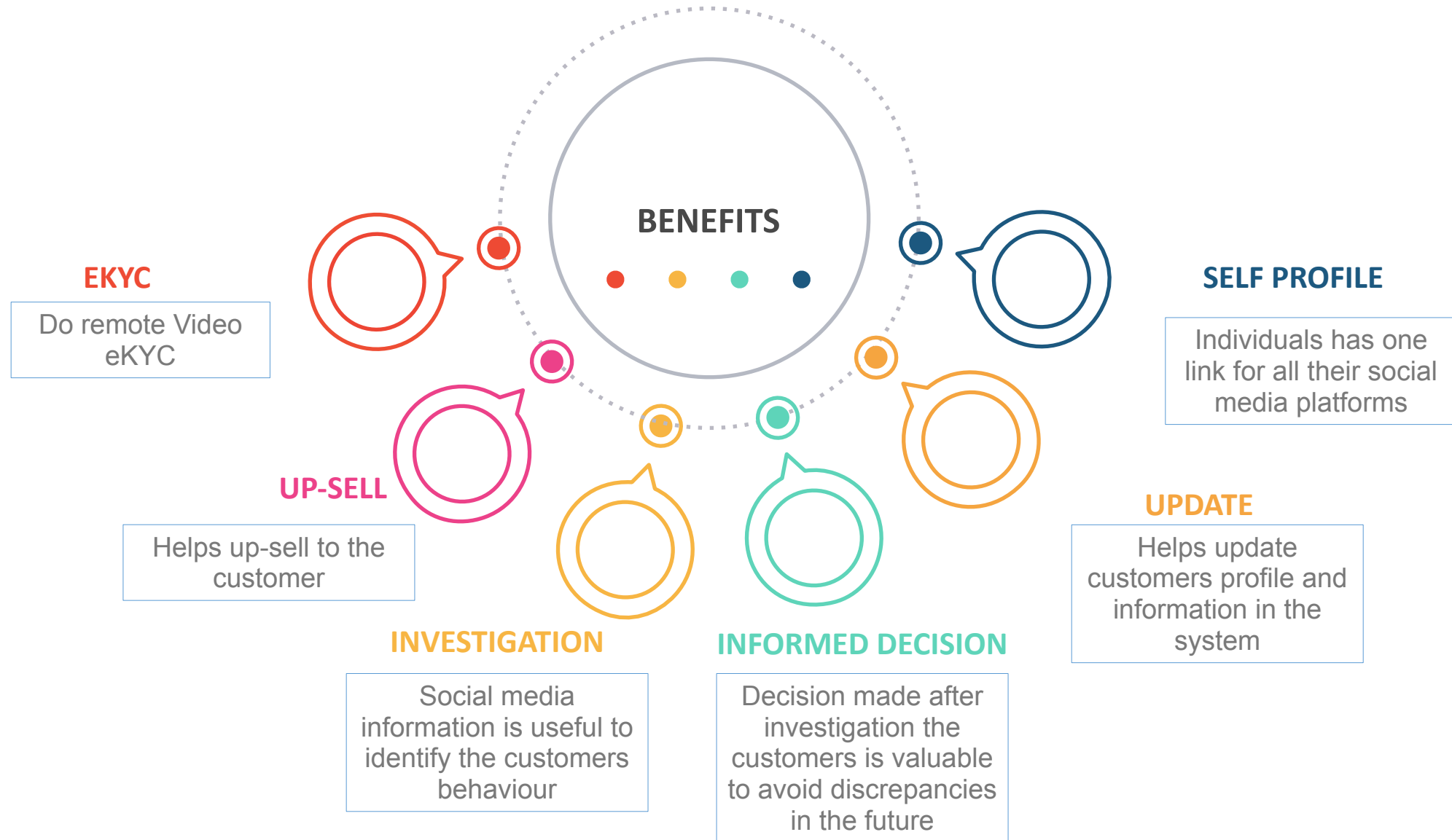
4

This Unique link offers the companies access to the individuals social media feed

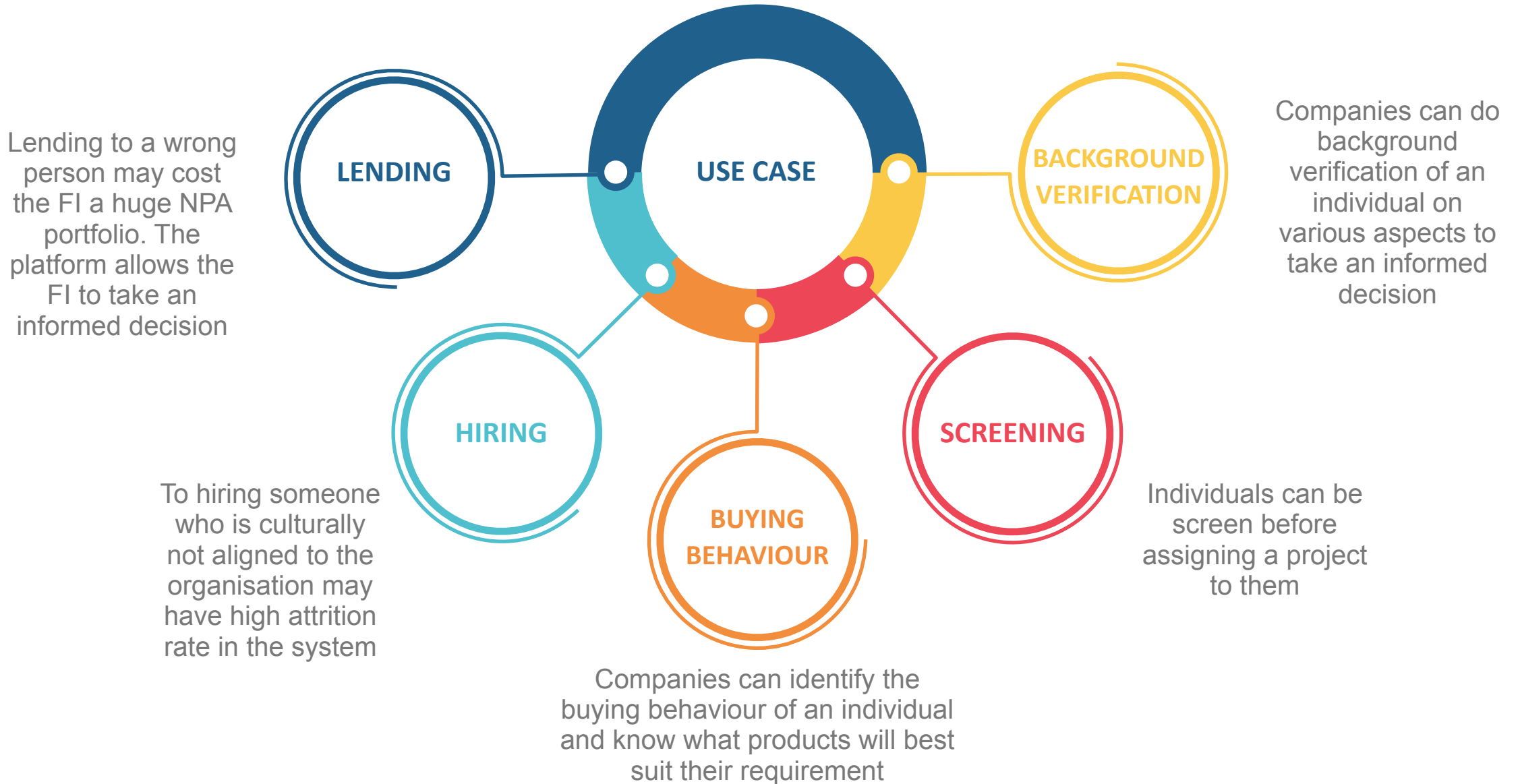
SHARING



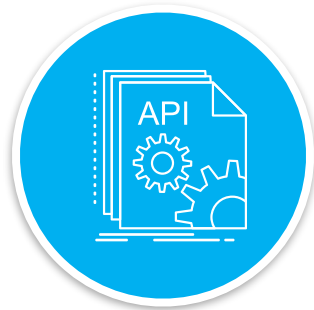
PROFILR SOCIAL BENEFITS



PROFILR SOCIAL USE CASE



ENGAGEMENT AND INTEGRATION



APIs



White label



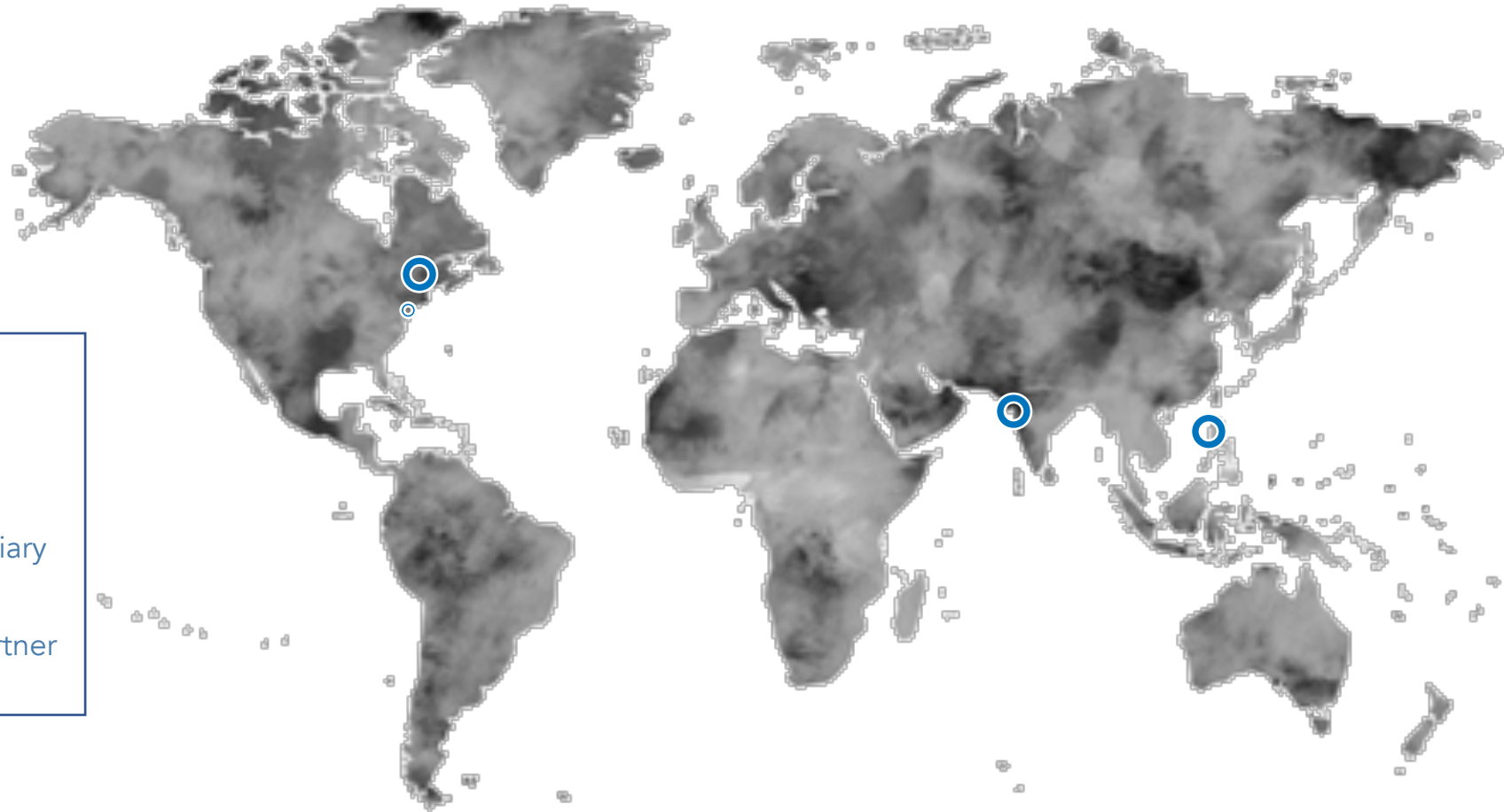
Sandbox



Partner Program

Brand As Your Own

OUR PRESENCE



- HO: Canada servicing North America
- Wilmington DA
- Mumbai, India : Subsidiary Office
- Makati, Philippines: Partner Office

The company is in a transformational state with presence and operations office to working through office networks with partners to monetize on global clients and growth.

Location

India: Rise, 19th Floor, Peninsula
Business Park, Tower B, Lower
Parel, Mumbai, Maharashtra

USA: 20c Trolley Square,
Wilmington De 19806 USA.

Phone

In: +91 84518 06555
1-844-THE-PAYMENT
Intl or USA 1-718-717-8657 or
Canada 1-514-504-2126

Email

darnesv@emphasispay.com

Sales@smartcardmarketingsystems.com

Partnerships@smartcardmarketingsystems.com

mbarone@smartcardmarketingsystems.com